

Air Starters



ST600 Series



ST700 Series



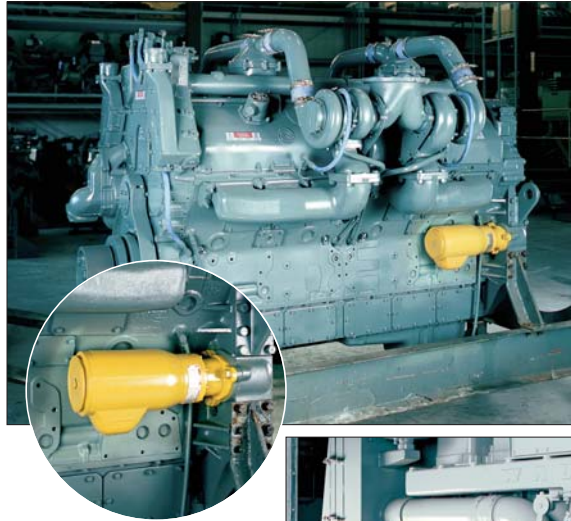
ST900 Series



ST1000 Series

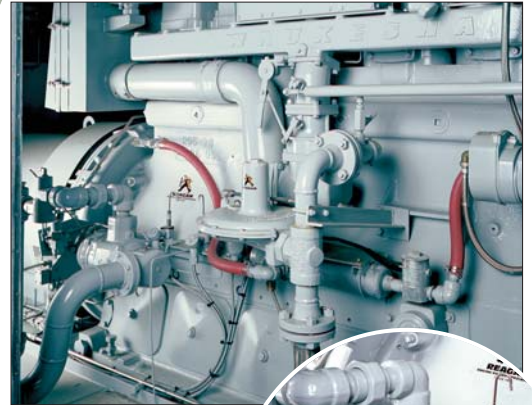


150T Series

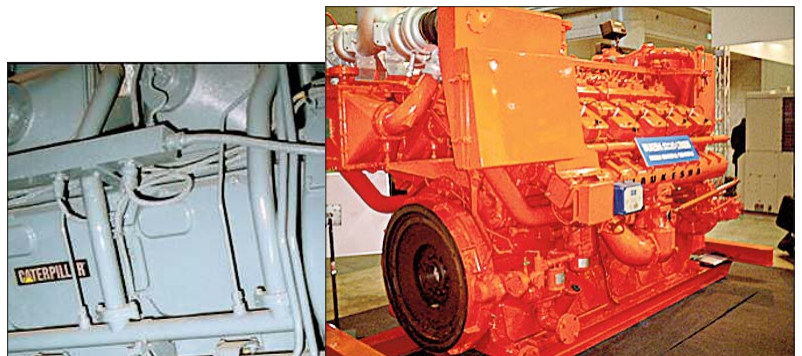


An ST650BP03R31 starter is shown mounted on a Detroit Diesel 12V-149R engine.

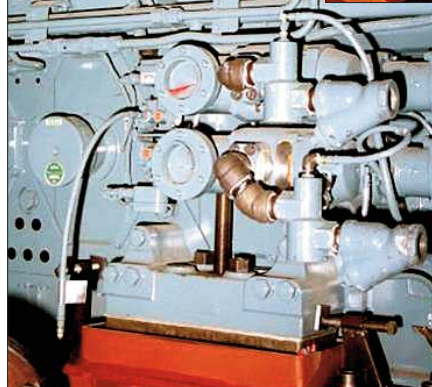
The ST799GCDP03R31 starter is piped for use with gas on a Waukesha F3521GU used for power generation.



Multiple starter application:
4 x ST900



Waukesha 12 cylinders, 115 liters displacement, started with Ingersoll Rand ST950



Two ST900 starters mounted on a Caterpillar engine